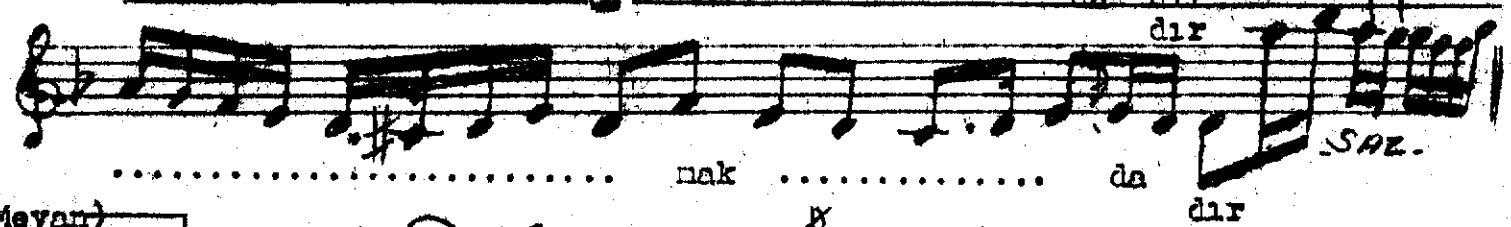
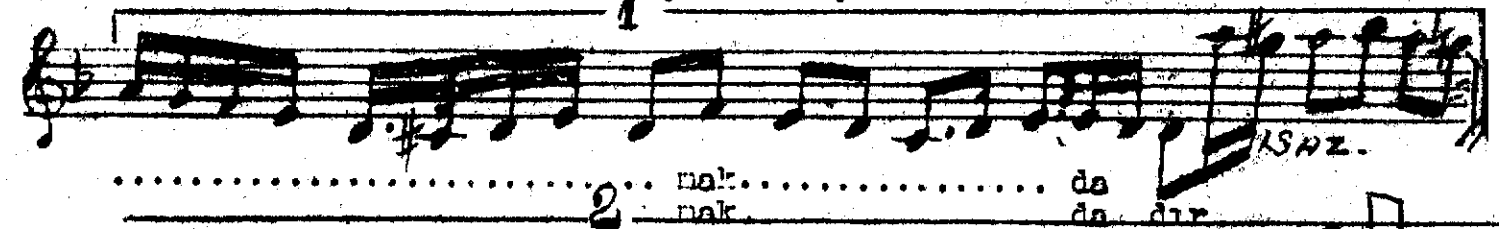
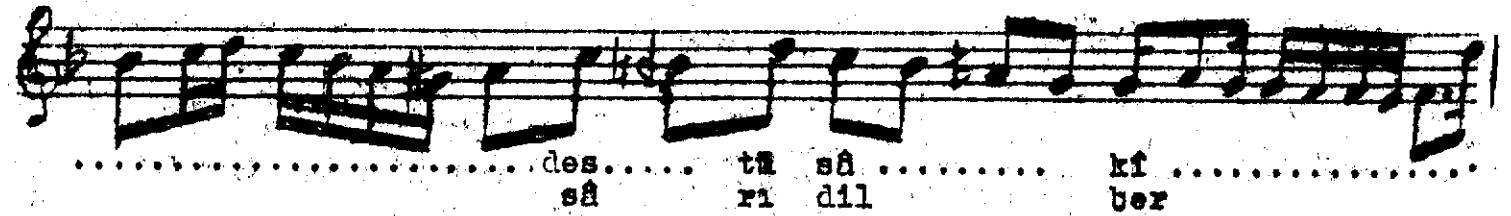
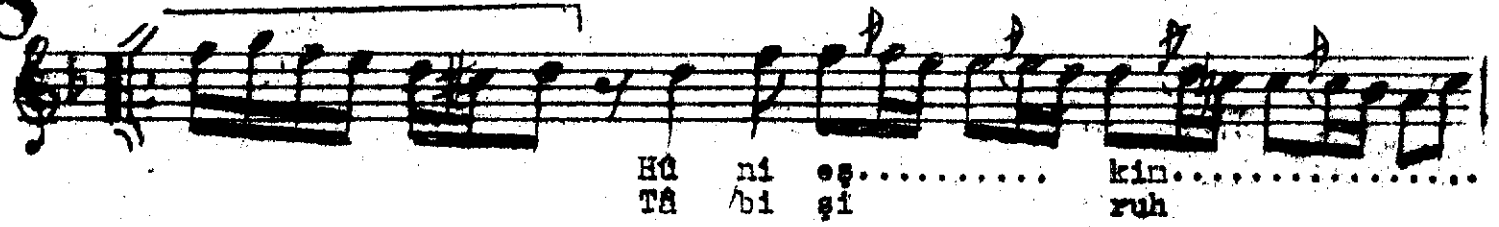
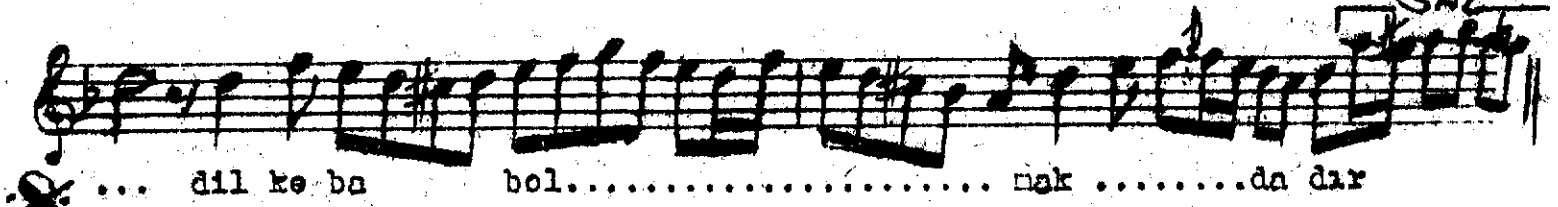
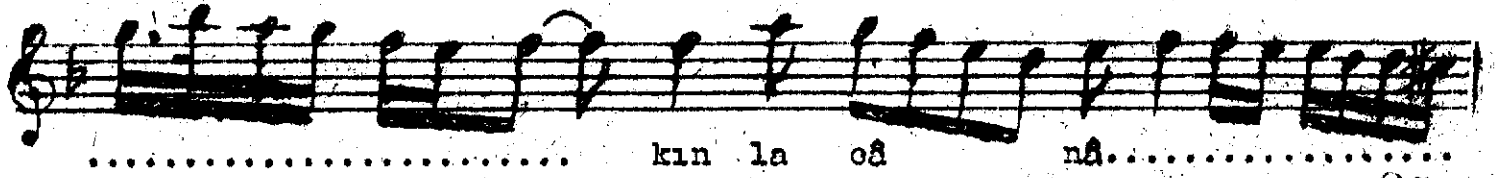
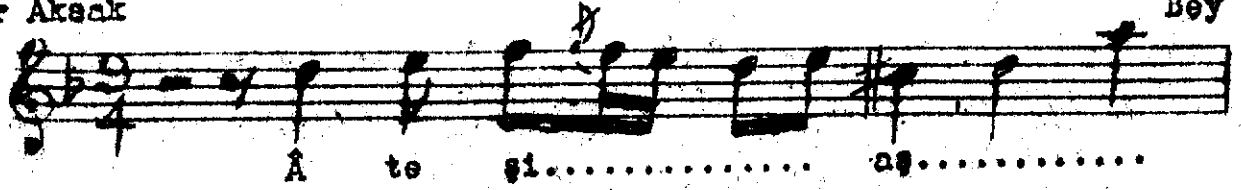


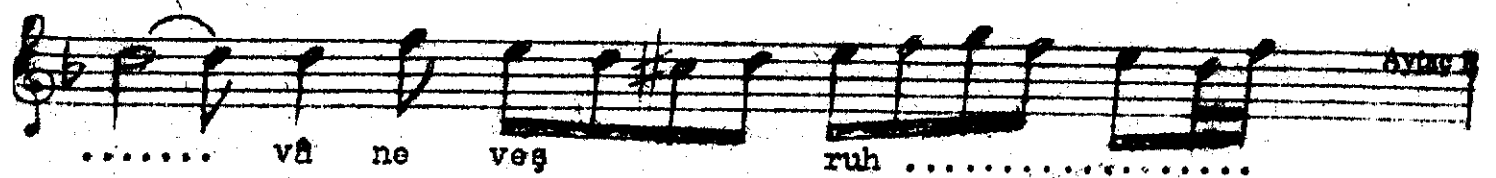
Usulü: Ağır Aksak

FERAHEZÂ ŞARKI

Muallim İsmail Hakkı Bey



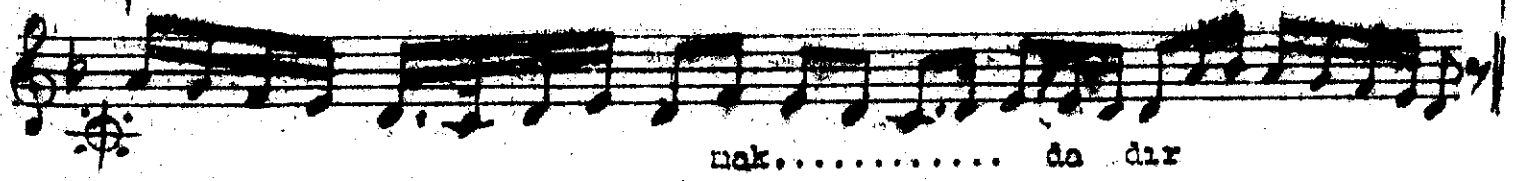
(Meyan)



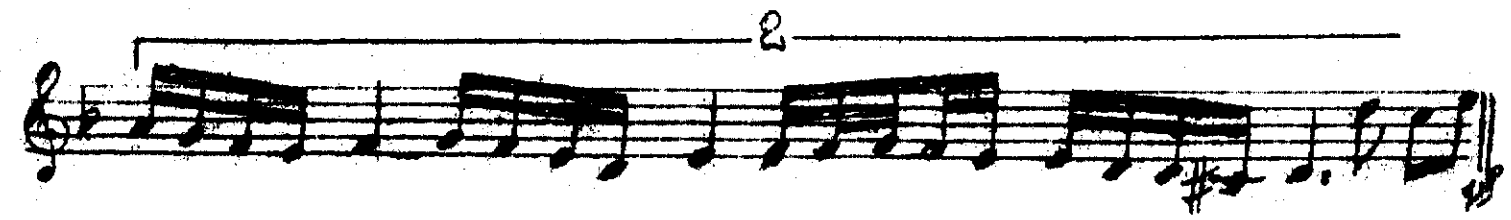
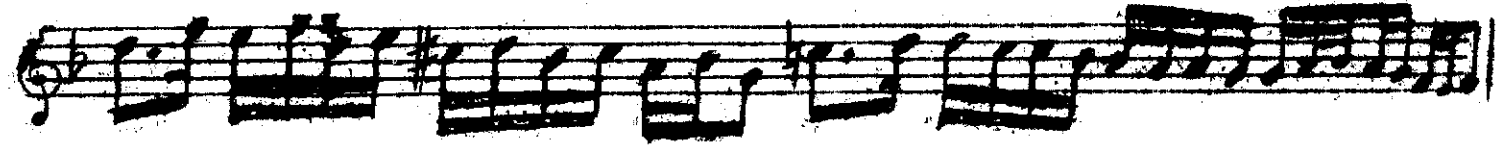
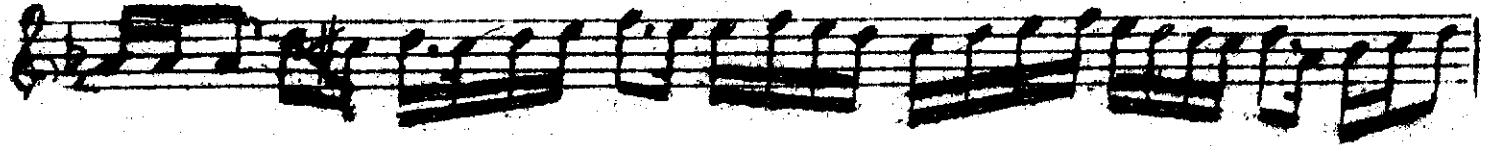
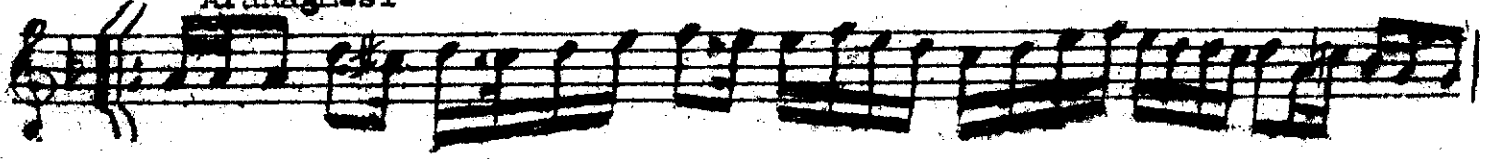
Ferahîşâ Şarkının devamı

Karar

1952



Arananması



Ateşi

Ateş-i aşkınla cânâ dil kebâb olmaktadır
Hân-i eşkin dest-i sâkidâ şarâb olmaktadır
Akibet yakdın benî perwâne-veş ruhsârına
Tâbiş-i ruhsâr-ı dilber şu'le-yâb olmaktadır.

Cânâ - ey sevgili
Dil - gönül
Hân - kan
Eş - göz yaşı
Dest - el
Sâki - içki dağıtan
Veş - gibi
Ruhsâr - yanak
Tâbiş - parlayış,
şu'le - alev.
parıldayış